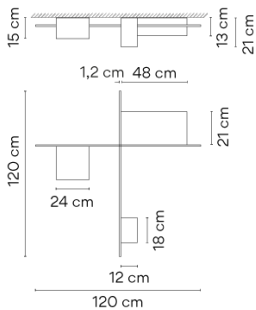
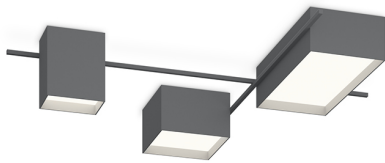




## 2645

Design By Arik Levy

Ceiling light where different cubic volumes meet or expand to provide flexible solutions, maintaining spatial order.

### Model Sheet



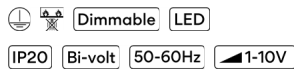
<b>Finish</b>	 15 Grey L2 NCS S 2500-N
	 21 Black Grey NCS S 7000-N
<b>LED temperature color</b>	3000 K
<b>Dimming</b>	1-10V <b>Optional</b> DALI or Casambi Min. quantity, upcharge and extra lead time apply [EN]
<b>Installation type</b>	Surface Canopy

**Materials** Body: Aluminum  
Diffuser: Polycarbonate  
Profile: Aluminum

**LED** CRI>90  
3000 K

**Driver** CV - Constant Voltage [object Object] 110-240 V 50/60 HZ

**Remarks** Main input by the biggest box



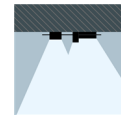
**Application** Ceiling Lamps

**Packaging** 4 Box  
0.24 m x 0.38 m x 0.38 m  
Gross weight 14.3  
Net weight 10.2  
Vol. 0.0547

#### Lighting effect

##### General Lighting

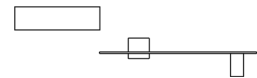
Lamp for general lighting with an opaque shade and distributing light upwards and/or downwards mainly.



#### Photometric Data

<b>Efficiency</b>	69.34 lm/W
<b>Coordinate System</b>	CG
<b>Total Flux</b>	5200.43 lm
<b>Maximum Value</b>	2251.45 cd

#### Other Applications



All of our products come with a five-year warranty.  
Check our legal terms at [www.vibia.com/warranty](http://www.vibia.com/warranty)